

# MONTHLY MEMBERSHIP PROGRESS REPORT

LOCATION ILLINOIS

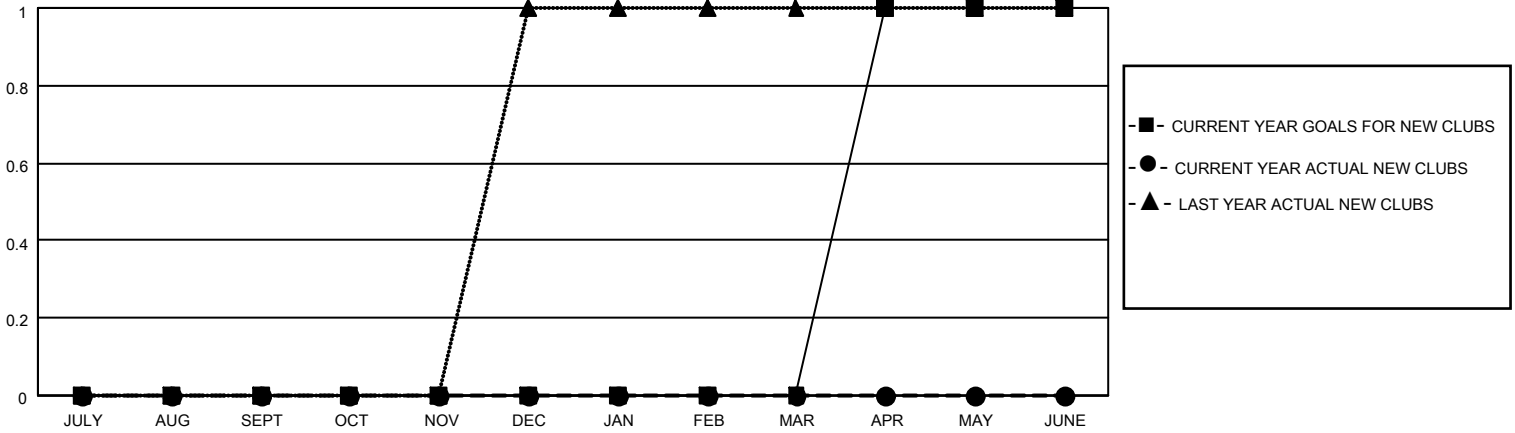
District 1 H

Results as of: 4/30/2022

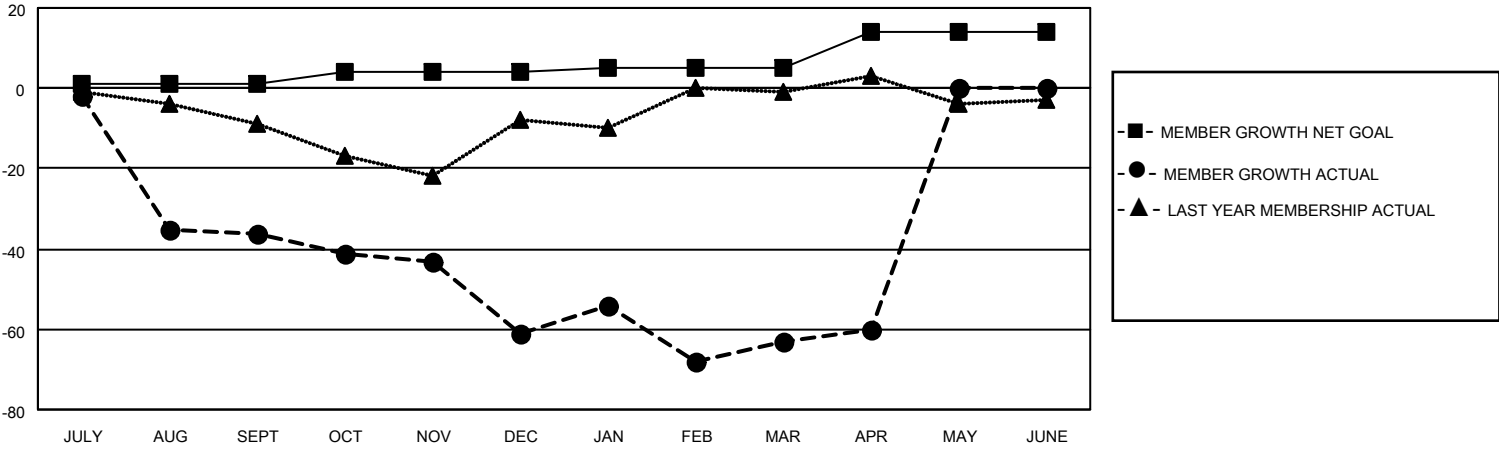
Clubs			
RESULTS FOR 2021-2022			
QUARTER	NEW CLUB GOAL	NEW CLUBS	DROPPED CLUBS
JULY/AUG/SEPT	0	0	2
OCT/NOV/DEC	0	0	0
JAN/FEB/MAR	0	0	2
APR/MAY/JUNE	1	0	0

Members			
RESULTS FOR 2021-2022			
QUARTER	MEMBER GROWTH NET GOAL	MEMBER GROWTH ACTUAL	DROPPED MEMBERS ACTUAL (including transfers)
JULY/AUG/SEPT	1	32	50
OCT/NOV/DEC	3	18	43
JAN/FEB/MAR	1	22	24
APR/MAY/JUNE	9	4	1

**GOALS AND ACTUAL NEW CLUBS CUMULATIVE**



**GOALS AND ACTUAL MEMBERS CUMULATIVE**



DROPPED CLUBS: 4	
<u>DROPPED MEMBERS</u>	
DECEASED	7
CLUB CANCELLED	42
OTHER	69
<b>TOTAL</b>	<b>118</b>

17 CLUBS OF 39 ADDED 1 OR MORE NEW MEMBERS

[CLICK HERE FOR CUMULATIVE MEMBERSHIP DATA](#)

<u>GENDER DISTRIBUTION</u>	
MALE	673 (74.12%)
FEMALE	235 (25.88%)
NON BINARY	0 (0.00%)
PREFER NOT TO ANSWER	0 (0.00%)
TOTAL FAMILY UNIT MEMBERS	
	125
FAMILY MEMBERS PAYING HALF DUES	
	64